

NPC12-150FT 12V150AH

VRLA BATTERY

POWER AGM BATTERY

Front Access GEL Battery

Range Summary

By combining the newly developed nano gel electrolyte with up-to-date AGM structures, it created the innovation JPF range of batteries. The range features 15 years design life and front access connections for fast, easy installation and maintenance. This range battery is highly suited to telecom outdoor applications, renewable energy systems and other harsh environment applications.

Application

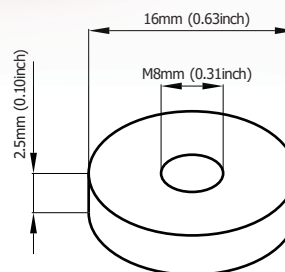
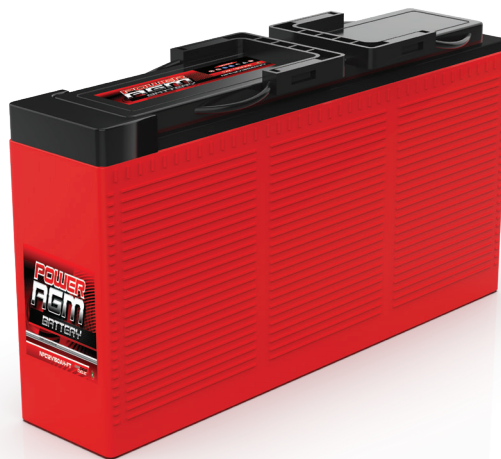
- Telecom
- Control Equipment
- UPS
- Communication Equipment
- Medical Equipment
- Emergency Power System

General Features

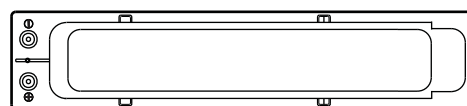
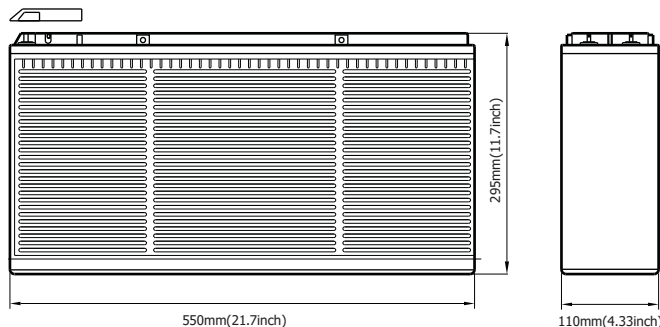
- Easy maintenance and installation
- No need for extra (wrench space) above battery
- Sealed and maintenance free operation
- Non-Spillable construction design
- ABS containers and covers(UL94 V0, optional)
- Safety valve installation for explosion proof
- Maximized energy density for installation in relay rack trays
- High quality and high reliability
- Exceptional deep discharge recovery performance
- Flexible design for multiple installation positions

Construction

- Positive Lead dioxide
- Negative Lead
- Container ABS
- Cover ABS
- Sealant Epoxy Resin
- Safety valve EPDR
- Terminal Copper
- Separator AGM
- Electrolyte Acid with gel

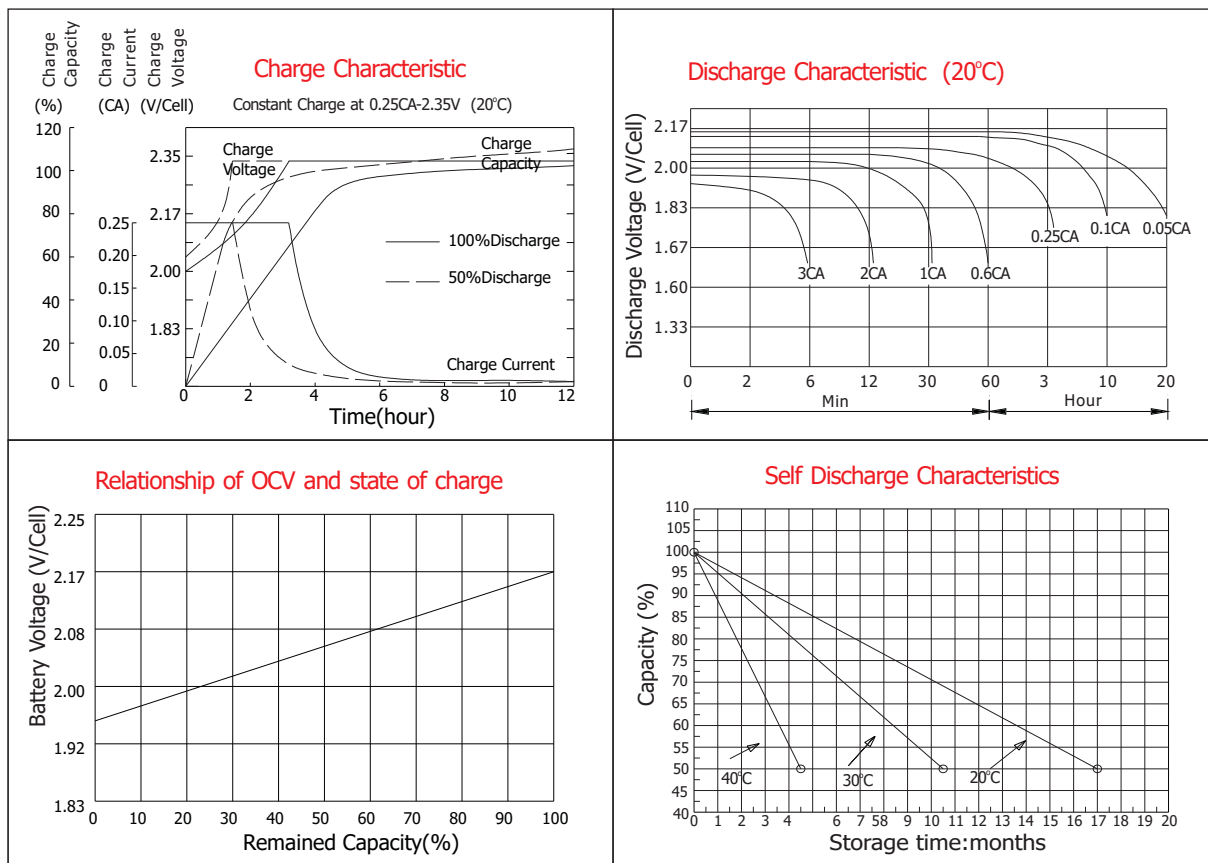


Terminal Dimensions



| Battery Model | NPC12-150FT | | | |
|----------------------------------|---|-------------------|-----------------------|------------------|
| Designed Floating Life | 15 Years | | | |
| Capacity(20°C) | 20HR(7.94A,1.80V) | 10HR(15.0A,1.80V) | 5HR(26.0A,1.75V) | 1HR(94.1A,1.60V) |
| | 159Ah | 150Ah | 130Ah | 94.1Ah |
| Dimensions | Length | Width | Height | Total Height |
| | 559mm(21.7inch) | 110mm(4.33inch) | 298mm(11.7inch) | 298mm(11.7inch) |
| Approx. Weight | 48.0Kg (105.6 lbs) | | | |
| Internal Resistance | Full charged at 20°C: 0.004 Ohm | | | |
| Self Discharge | 3% of capacity declined per month at (20°C) | | | |
| Capacity Affected by Temp.(10HR) | 40°C | 20°C | 0°C | -15°C |
| | 109% | 100% | 85% | 65% |
| Charge Voltage(20°C) | Cycle use | | Float use | |
| | 14.1-14.4V(-30mV/ °C), max. Current: 37.5A | | 13.5-13.7V(-18mV/ °C) | |

Front Access GEL Battery



Constant current discharge ratings-amperes at 20°C

| F.V/Time | 5min | 10min | 15min | 30min | 1h | 3h | 5h | 10h | 20h |
|----------|------|-------|-------|-------|------|------|------|------|------|
| 1.60V | 525 | 360 | 263 | 158 | 94.1 | 41.0 | 26.5 | 15.9 | 8.30 |
| 1.67V | 473 | 329 | 255 | 153 | 93.9 | 40.8 | 26.3 | 15.7 | 8.27 |
| 1.70V | 449 | 317 | 246 | 150 | 93.6 | 40.7 | 26.2 | 15.5 | 8.25 |
| 1.75V | 399 | 293 | 233 | 147 | 92.6 | 40.5 | 26.0 | 15.3 | 8.23 |
| 1.80V | 360 | 272 | 222 | 143 | 91.5 | 40.4 | 25.7 | 15.0 | 7.94 |
| 1.85V | 273 | 224 | 192 | 131 | 90.5 | 40.2 | 25.5 | 14.7 | 7.47 |

Constant power discharge ratings-watts at 20°C

| F.V/Time | 5min | 10min | 15min | 30min | 1h | 3h | 5h | 10h | 20h |
|----------|------|-------|-------|-------|-----|------|------|------|------|
| 1.60V | 866 | 597 | 465 | 297 | 185 | 78.6 | 52.2 | 31.8 | 16.6 |
| 1.67V | 821 | 590 | 461 | 291 | 179 | 78.3 | 52.0 | 31.3 | 16.5 |
| 1.70V | 767 | 575 | 453 | 284 | 174 | 78.0 | 51.8 | 31.1 | 16.4 |
| 1.75V | 714 | 537 | 426 | 276 | 173 | 77.4 | 51.5 | 30.6 | 16.2 |
| 1.80V | 641 | 500 | 401 | 269 | 170 | 76.4 | 50.6 | 30.0 | 15.9 |
| 1.85V | 513 | 414 | 350 | 246 | 168 | 76.1 | 49.9 | 29.5 | 14.9 |