

### Physical Specification (mm)

Nominal Voltage		12V
Nominal Capacity(20HR)		80Ah
Dimension	Length	315±2mm(12.4inches)
	Width	175±2mm(6.89inches)
	Container Height	190±2mm(7.48inches)
	Total Height(with Terminal)	190±2mm(7.48inches)
Weight With Acid		Approx 24.0Kg(52.9lbs)
Acid		1.30±0.015g/cm <sup>3</sup> (25°C)
Standard Terminal		1
Cell layout		0
Hold-Down		/
Case		Black-Material (PP)
Cover		Black-Material (PP)
Handle		Black-Material (PP)



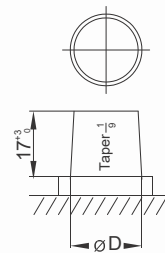
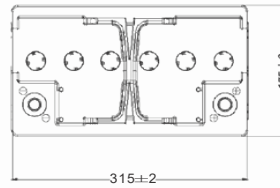
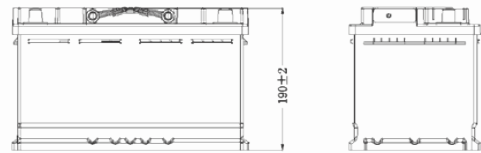
### Electrical Specification

Rated Capacity	20 hour rate(2.0A)	80Ah
Reserve Capacity (RC)25A@10.5V		140min
Cold Cranking Performance Amps(CCA) @0°F(-18°C)		800A

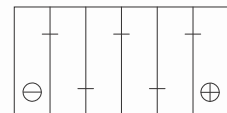
### Standard Terminal (mm)

Terminal Type	D	
	Positive	Negative
1	19.5 <sup>0</sup> <sub>-0.3</sub>	17.9 <sup>0</sup> <sub>-0.3</sub>

### Dimensions (mm)

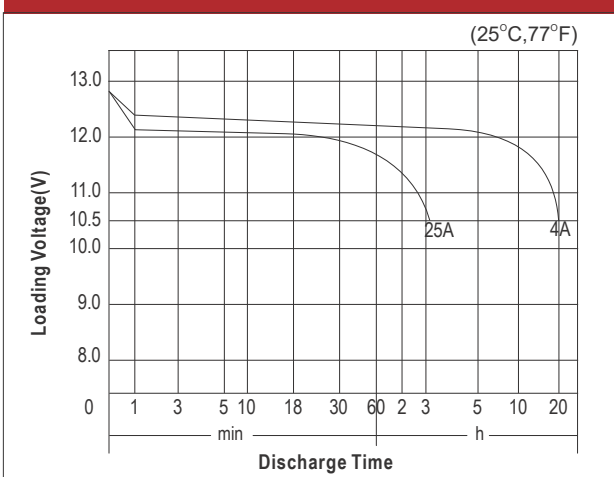


### Cell Layout



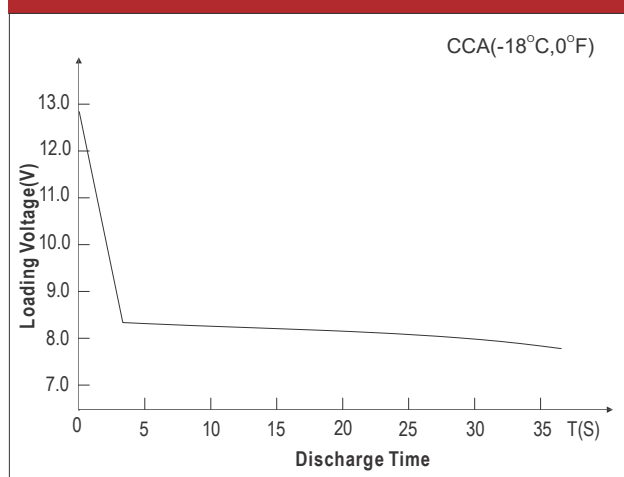
Figure(0)

### Discharge Characteristics



Specifications subject to change without notice

### Discharge Characteristics



Publication No.:LB-QA-07-14